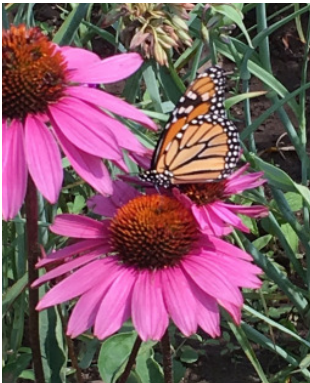
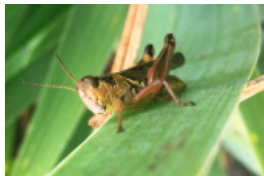




**Youth Environmental
Entrepreneurship Program (YEEP)**

Native Plant Catalog 2018

**Hardy, Drought-Tolerant Perennials for
Pollinator-Friendly Gardens**



Youth Environmental Entrepreneurship Program (YEEP)

Meadowscaping for Biodiversity and our partners offer teens the opportunity to **LEARN, EARN, AND RETURN.**

Teens age 15-19 form an enterprising gardening service to sell, install, and maintain hardy perennial native plants for homeowners and businesses.

Why plant natives?

Pollinators are essential to the growth of 70 percent of the plants that make up the human food supply. The populations of pollinators, such as butterflies, bees, and other beneficial insects, have been crashing due to habitat loss, pesticides, and climate change.



Native plants support pollinators in peril

The Xerces Society says that "a wildflower-rich habitat is the most significant action you can take to support pollinators." Native plants are host plants to native insects and caterpillars and the "best source for nectar and pollen for native pollinators."

Beautify your yard with native plants

Sustain pollinators such as bees, butterflies, and other beneficial insects, and help teens develop skills that increase their prospects for academic and career success!

Copyright © 2018. Meadows for Biodiversity. 781-209-0052.
All Rights Protected Worldwide.

A GUIDE TO THIS CATALOG

To make it easy for you to beautify your yard and help the environment, we offer six collections of hardy, drought-tolerant natives: Yellow and Orange; Red, White, and Pink; Blue and Purple; Ferns; Grasses; and Shrubs. You can mix and match plants with different colors, heights, bloom time, etc., from these collections to develop your own unique ecosystems garden.



To make your garden sing, purchase three or more of the same plant and ask for them to be planted together. As they grow, they will fill out the area. For example, to make a gorgeous statement in yellow that blooms all summer into the fall, you could plant three each of Black-eyed Susan, Coreopsis, Butterfly Weed, and Goldenrod.

LUSH MEADOW or CONTROLLED GARDEN?

This top photo of an urban meadow on the former east lawn of Christ Church Episcopal, 750 Main Street, Waltham, was taken in September 2014 — three months after planting it. The photo below shows the meadow two years later (July 2016). Which style of meadow would you like?



NOTE: Plants are sourced from the New England Wildflower Society (Garden in the Woods and Nasami Farms); Van Berkum Nursery, Russell's Garden Center, and Weston Nurseries.



Copyright © 2018. Meadowsclaping for Biodiversity. 781-209-0052.

All Rights Protected Worldwide.

Thank you!

A grateful thank you to sponsors and participants including the City of Waltham, City of Cambridge, City of Somerville, City of Boston, Reservoir Church, First Parish Church (Waltham), Charles River Conservancy, Green Cambridge, Green and Open Somerville, Laura Eisener Landscape Design, Magazine Beach Partners, Friends of the Boston Esplanade, and many other organizations and individuals.

We appreciate the generosity of the New England Grassroots Environment Fund, Watertown Savings Bank, RTN GoodWorks Foundation, Hannaford Brothers Company, Pintebone Landscaping, Waltham Garden Club, and Waltham Cultural Council.

All these organizations make this program possible for the young women and men who participate, and the volunteers, staff, and all others who benefit from helping promote healthy youth development and saving the Earth in their own backyards.

Barbara Passero
Founder/Director

Jean Devine
**Co-Creator/Program
Leader**